



kouga wind farm
Community Development Trust

»»» **Q4 NEWSLETTER** «««

**BUILDING RESILIENT, SELF-RELIANT,
AND SUSTAINABLE COMMUNITIES**

February 2024



082 544 5618



042 004 0003



info@kwftrust.co.za



www.kwftrust.co.za



7 Kemp Street,
Humansdorp, 6300

Q4 News

And Highlights



KWFCDT Launches Phase Two of the Umzamowethu Retrofit Project

KWFCDT teamed up with Kouga Local Municipality, Oyster Bay Wind Farm, and Build It Jeffreys Bay to officially launch Phase Two of the Umzamowethu Retrofit Project! The launch was graced by community members, beneficiaries, stakeholders, the Trust board members, and key project partners and service providers.

It was also heartwarming to hear Mr. Ndamase of Isiviko Construction praise the Trust for its transparency in all procurement and financial processes. Isiviko Construction is one of the 6 local SMEs empowered with construction PPE & equipment during this project! A huge thank you to all attendees once again!



Strengthening Partnerships: KWFCDT Meets New Kouga Circuit Manager

The KWFCDT team had a productive meeting with the newly appointed Kouga Circuit Manager of the Department of Education (DoE), Mr. Mangaliso Mbatana.

The KWFCDT team had a productive meeting with the newly appointed Kouga Circuit Manager of the Department of Education (DoE), Mr. Mangaliso Mbatana. This meeting focused on the Trust's ongoing developmental efforts in education and further solidified the collaborative relationship between the DoE and the Trust.

As a catalyst, the Trust emphasises developing partnerships across all sectors to maximise effectiveness. This approach not only fosters collaborative and collective capital but also creates shared value, contributing towards the Trust's vision of resilient, self-reliant, and sustainable communities.

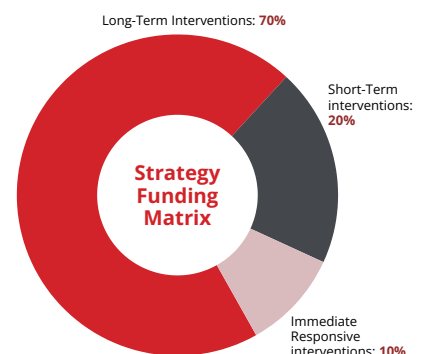
Message from the GM

In our continuous effort to effectively respond to the unprecedented funding requests across our seven focal pillars, the Trust has sharpened its strategy, adopting a more intentional approach to fulfil its mandate. I'm pleased to share with you the new 70/20/10 strategy framework.

70%: Long-term interventions whose impact becomes visible after 3+ years, under the pillars: Education & Skills Development, Enterprise Development, and Healthcare. 20%: Short-term interventions with a visible impact and implementation within a 3-month to three-year period. This will include the Infrastructure Development and Arts, Culture & Sports Development pillars. 10%: Immediate responsive interventions address urgent community needs or emergencies with instant impact.

With this funding strategy, the Trust will be guided by five key Funding Principles: Embracing collaborations with service providers (SPs), Encouraging multi-funding, Fostering multi-sectoral, participation Excluding funding of operational costs like staff salaries and office rental, and Implementing a cap on management fees.

This refined strategy and guiding principles will enable the Trust to make more significant and measured impacts that align with its vision and goals. I look forward to embarking on this refined strategic path with you, as we continue to empower and uplift our communities together.





KWFCDT

Welcomes new Projects Operations Officer

The Trust recently welcomed Mr. Siyabulela Zondani as the new Projects Operations Officer. An accomplished business development practitioner, Siyabulela has extensive skills in Project Management, Community Development, and Leadership Development.

His expertise will drive the Trust forward as it continues to strive towards being a catalyst that empowers communities to be resilient, self-reliant, and sustainable.

How do you envision enhancing the Trust's impact within the communities it serves? Building on the Trust's commendable work, I see myself strengthening the collaborative work that exists within the ecosystem in which the trust operates. Furthermore, I look forward to deepening the impact of socioeconomic projects and investments within the beneficiary communities using the Trust's Theory of Change philosophy as a guiding framework.

What excites you the most about joining the KWFCDT? The Trust has been part of a number of exciting and impactful initiatives within its four beneficiary communities and I believe that it will continue to be a leading partner in implementing catalytic socioeconomic projects that bring about the winds of change where it is needed most. It is because of this that I embrace the privilege of being part of a team that drives high standards of excellence and delivers on its brand promise.

Get To Know

The KWFCDT Trustees!

Masechaba Malibu: **Independent Trustee**



Masechaba is a sustainable development professional who strongly believes in value creation, where success at a personal and business level, is linked to social progress. She is the Co-founder and Director at Forethought Africa, a social impact advisory and management services company. At Forethought Africa, she she leads engagements in the areas of Sustainability and Social investment Strategy and Impact Management.

Masechaba is recognised in the renewable energy industry as one of the leading minds in Economic Development.

Marisa Bester: **KWF Representative**



Marisa is an experienced investment specialist skilled in Financial Structuring, Corporate Finance, and Private Equity, particularly in the Infrastructure sector, including Renewable Energy. After leaving the sector briefly, she returned just in time for the first round of the IPPs in 2012.

"It is especially motivating to know that the impact of these renewable energy projects is spread across the country in new communities, since these plants are situated in areas which did not traditionally participate in energy generation," she says

Matodzi Ratshimbilani: **Independent Trustee**



Matodzi is an experienced Corporate Commercial Law Attorney who has practised law for over 25 years focusing on Corporate Commercial Law, Public Law, Company Law and Corporate Governance in general and with specific focus on State Owned Companies.

He founded and was the managing partner of MNMR Attorneys before joining one of South Africa's largest law firms as a director in the corporate commercial team with a specific focus on mining related mergers and acquisitions. He later left to co-establish TGR Attorneys. He currently heads up the Corporate Commercial department and is a member of the Management Committee.

Education and Skills Development

Poultry Farming and Food and Beverages Learnership Programme

The Poultry Farming and Food & Beverages Learnership Programmes are key initiatives under the Education and Skills Development pillar.

Committed to nurturing the talents of local youth, the Trust is providing local young people with the essential skills and knowledge needed for thriving in these sectors.

Significant investments in learner transport and monthly stipends have been made, reflecting the Trust's dedication to empowering the next generation through targeted skills development, contributing to the sustainable growth and resilience of the community.



Highlights and Impact



R135K+

Paid towards learner transport to the respective experiential learning sites



R120K+

Paid towards monthly stipends



70%

Of the Poultry Farming learners competent for a full qualification, 30% partially competent.



45%

Of the Food and Beverages learners competent for a full qualification, 30% partially competent

Afterschool Programme: Science, Coding and Robotics



The Kouga Wind Farm Community Development Trust has proudly invested R79,000+ towards stipends for five local youths, appointed as programme champions known as 'Super Users'.

This underscores the Trust's commitment to creating youth employment opportunities. The dedicated Super Users play a crucial role in supporting teachers, ensuring the effective implementation of the Science, Coding and Robotics programme across all beneficiary schools.

In addition to youth employment creation, this investment also emphasises the Trust's commitment to enhancing educational opportunities and fostering technological skills among students.

Highlights and Impact



R79K+

Paid towards stipends for the 'Super Users'



5

Employment opportunities created for unemployed youths



ECD Remedial Programme

In collaboration with the Centre for Early Childhood Development (CECD) and Breadline Africa, the Trust proudly handed over two ECD centres in Humansdorp after comprehensive infrastructure upgrades as well as new educational equipment, an investment valued at approximately R600,000.

ECD centres serve as vital community hubs, offering safe spaces for children to play, grow, and learn - laying a solid foundation for their future.

With these ECD centres and the rest of its education initiative, the Trust is committed to nurturing the potential of young minds and strengthening community ties. Additionally, this initiative highlights the power of partnership and collective effort in building brighter futures for our children and, ultimately, our country.



Highlights and Impact

**A
B
C**
R600K
Worth of infrastructure
upgrades and
education
equipment

Welfare And Humanitarian Support



KwaNomzamo HCBC

KwaNomzamo Home Community Based Care (HCBC) supported by the KWFCDT, distributed 81 food parcels to beneficiaries in need. This ensured that individuals such as the chronically ill, orphaned, vulnerable, child-headed households, elderly, and malnourished have access to nutritious meals necessary for taking their chronic medication.

By prioritising fundamental needs like nutrition, the Trust endeavors to combat poverty and hunger head-on, aiming to improve the overall health and well-being of the community.

This approach aligns seamlessly with its Welfare and Humanitarian Development Pillar which seeks to create thriving, resilient, empowered and sustainable communities. This will lead to reduced poverty and hunger, and increased health and well-being.



Highlights and Impact

81
Food parcels donated
to beneficiaries

ECD Nutrition Programme: The Lunchbox Fund

In September of 2023, the Kouga Wind Farm Community Development Trust proudly launched an ECD Nutrition Programme through The Lunchbox Fund. This innovative programme was designed to nourish the bodies and minds of young learners across 20 Early Childhood Development (ECD) centres.

Beyond providing essential nutrition, the programme has also been instrumental in creating job opportunities within the community. By employing 20 local 'Food Mamas,' the initiative not only supports the centres but also allows educators to focus their efforts on what they do best – teaching and nurturing the potential of each child.



The success of the Lunchbox Fund, characterised by its provision of over 33,060 nutritious meals daily during school days for the past five months, showcases the tangible impact of thoughtful, community-focused initiatives.

Highlights and Impact

R170K+
Paid as stipends to local "Food Mamas"

20
Employment opportunities created for unemployed local women

33060
Nutritious meals served daily on school day over the past five months

570
Children enriched with nutritious meals across

20
Local ECD centres impacted

Sports

Arts and Recreation

Combi-Courts Retrofit Project



A significant investment was also made towards the physical and social development of young learners through the construction and retrofitting of local school sports infrastructure.

A brand new combi-court has been constructed at Kruisfontein Primary School, accompanied by the retrofitting of four existing combi-courts at Mzingisi, Graaslagte, and Kruisfontein Primary Schools.

Highlights and Impact

R1.5M
Invested towards the construction and retrofitting of the combi-courts

5
Schools benefitted, 1 court constructed and 4 retrofitted

This total investment of R1.5 million is designed to enrich the school sports experience, offering learners access to more traditional sports like netball, and introducing them to tennis and basketball, which were previously unavailable.

These combi-courts not only diversify the physical education curriculum for the students but also open doors for them to explore new talents and interests in sports. The Trust continues to be committed to creating holistic educational environments where learners can thrive both in academics and in physical health.

Healthcare Development

Umzamowethu House Retrofit Project



The pilot phase of the initiative is complete, with 12 houses retrofitted. Phase 2 is underway, targeting an additional 42 houses.

Earlier this year, the Trust hosted two key sessions; a feedback meeting with the owners of the 12 newly retrofitted houses, gathering valuable insights on the improvements plus a plenary session with the 6 local SMEs involved, marking a significant step towards Phase Two of this transformative project.

In an effort to strengthen Enterprise and Skills Development, the project has provided training for six local SMEs in general construction, facilitated by a reputable and accredited training provider. Notably, two of these SMEs are women-owned, marking an important step towards inclusive economic development. Furthermore, 24 artisans have been capacitated, enhancing their skills in general construction. This initiative is improving living conditions, fostering sustainable community development, and supporting local entrepreneurship.

Highlights and Impact

R1.4M
Invested towards retrofitting the 42 houses

6
Local SMEs trained in general construction

33%
Of the 6 trained SMEs are women owned

24
Artisans capacitated on general construction

54
Houses to be retrofitted in total, 12 already completed

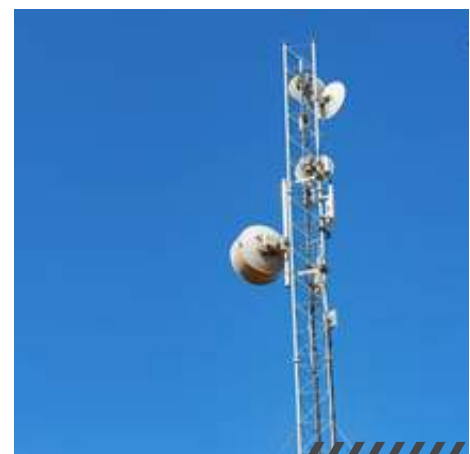
Enterprise Development

Wi-Fi Connectivity

The KWFCDT has over the past few months advanced the Wi-Fi Connectivity Project, which is integral to the Enterprise Development pillar.

Recognising the critical role of reliable internet access in fostering economic growth and educational opportunities, the Trust has appointed a dedicated service provider to ensure the network's optimal performance, with recent maintenance work aiming to maximise the network's utilisation by the beneficiary communities.

This initiative highlights the Trust's commitment to enhancing enterprise development within the communities it serves, as well as bridging the digital divide and opening up new avenues for growth and innovation.





KWFCDT TEAM 2024

THANK YOU!



082 544 5618



042 004 0003



info@kwftrust.co.za



www.kwftrust.co.za



7 Kemp Street,
Humansdorp, 6300