



kouga wind farm  
Community Development Trust



# Q3 NEWSLETTER



**BUILDING RESILIENT, SELF-RELIANT,  
AND SUSTAINABLE COMMUNITIES**

**November 2024**



082 544 5618



042 004 0003



info@kwftrust.co.za



www.kwftrust.co.za



7 Kemp Street,  
Humansdorp, 6300

# About

## the Kouga Wind Farm Community Development Trust



### Vision

To be a catalyst that empowers communities to be resilient, self-reliant, and sustainable.



### Mission

To fund and support interventions aimed at improving the quality of life, and the quality of education & skills through collaboration with key stakeholders.



### Values

Trustworthy, Engaged, Collaborative, and Empowering

## Q3 News

### And Highlights



### 2024 Annual General Meeting

The Kouga Wind Farm Community Development Trust (KWFCDT) held its 2024 Annual General Meeting, engaging stakeholders and presenting updates on its activities and projects.

A standout moment was the keynote address by Doc Imtiaz Sooliman, Founder of Gift of the Givers, who shared insights on "Restoration of Human Dignity."

The event followed a strategic board meeting where the Trustees reaffirmed their commitment to empowering communities and driving sustainable development.



### Celebrating Milkway Transport's Growth

The KWFCDT General Manager, Mr. Prince Matonsi, delivered a congratulatory message at the official handover of 10 trucks to Milkway Transport by the National Empowerment Fund (NEF) and Sarah Baartman District Municipality.

Founded in 2016, the black-owned, 60% women-owned logistics company has grown its fleet to 19 trucks, serving major clients like Woodlands Dairy and Coca-Cola Beverages Southern Africa. Congratulations to Milkway Transport on this milestone!



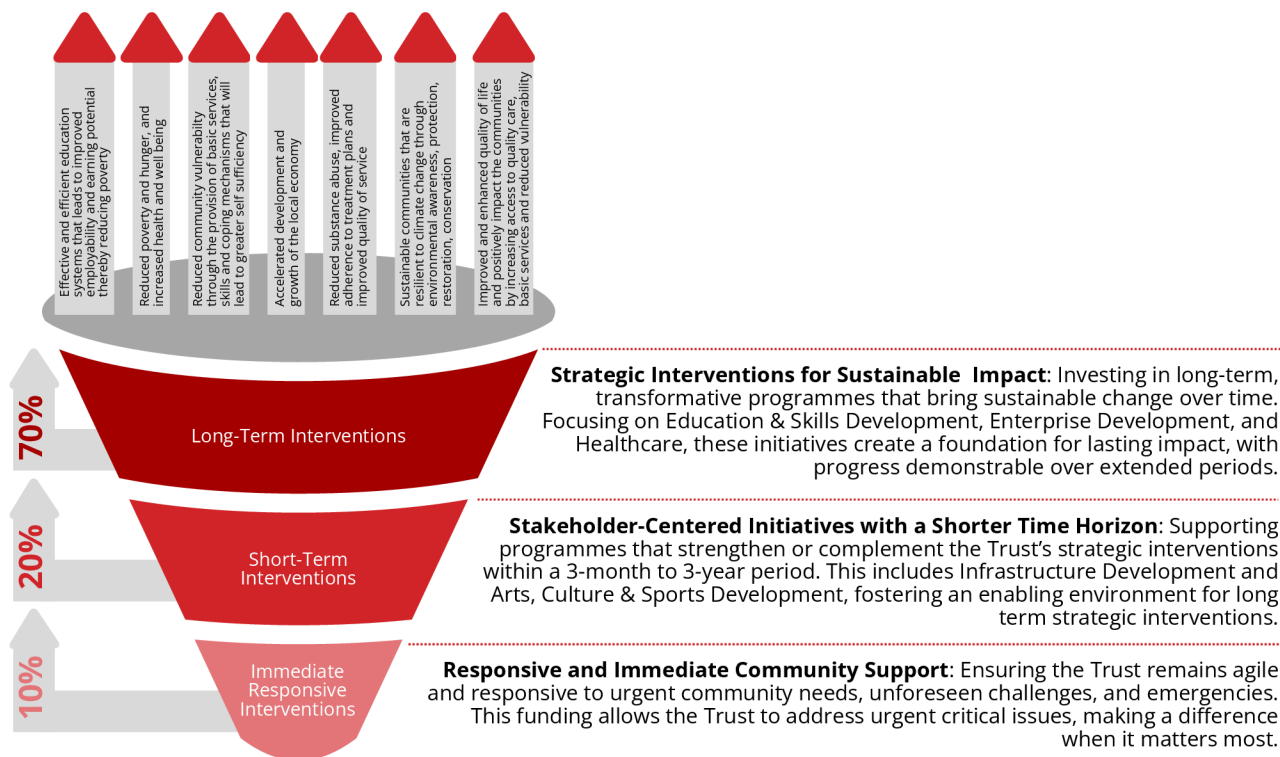


# Strategy Funding Matrix

## And Project Applications

### The 70/20/10 Strategy Framework

In a continuous effort to effectively respond to the unprecedented funding requests across the Trust's seven focal pillars, the Trust has sharpened its strategy, adopting a more intentional approach to fulfil its mandate with the new 70/20/10 strategy framework.



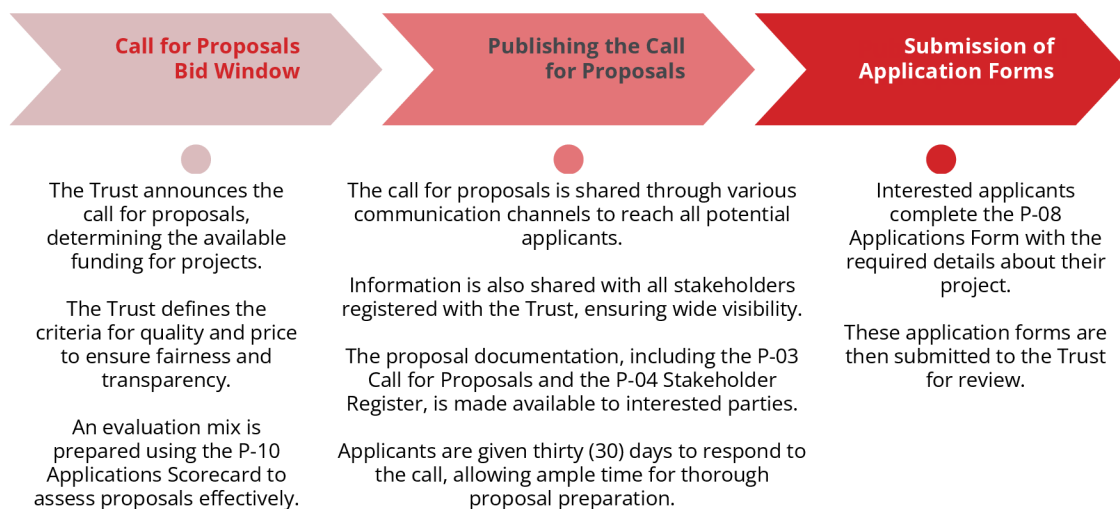
### The Five Key Funding Principles

With the new funding strategy framework, the Trust will be guided by five key Funding Principles:

- Embracing collaborations with service providers (SPs)
- Encouraging multi-funding
- Fostering multi-sectoral participation
- Excluding funding of operational costs like staff salaries and office rentals
- Implementing a cap on management fees

### Funding Application Process

From the initial call for proposals, to submission, the Trust's goal is to support innovative projects that foster community resilience, self-reliance, and sustainability. For detailed information and application documents, visit: <https://kwftrust.co.za/applications/>





## Education and Skills Development

### Combi-Courts Project: Phase 3

In the third phase of the Combi-Courts Project, the project was expanded to also include local high schools. Work is already underway at Lungiso High School and Humansdorp Senior Secondary School.

This initiative goes beyond infrastructure—it's about creating opportunities for young people to grow, build discipline, and learn teamwork through sports like netball, basketball, and tennis.

**2**

Combi-courts retrofitted at Humansdorp Senior Secondary

**1K+ 1**

Lungiso High School learners to benefit from the new court

**1**

Combi-court constructed at Lungiso High School

**1.8K+**

Humansdorp Senior Secondary learners to benefit from the newly retrofitted courts

These courts will serve as hubs for personal development, unity, and lifelong skills, ensuring a lasting positive impact on our communities.

### Humansdorp Senior Secondary

Before



After



### Lungiso High School

Early stages



After



### Tennis & Basketball Champions Programme

The Trust's Tennis & Basketball Champions Programme successfully hosted a variety of morale and team-building activities, including a Junior Basketball movie screening and an inter-school league, all aligned with the objectives of the 4-month initiative.

This impactful programme aimed to equip learners with essential basketball and tennis skills, engage teachers and community volunteers as mentors, and foster social cohesion within the communities.



### Basketball

**163**

out of the targeted 150 learners trained in fundamental basketball phases

**8**

dedicated teachers out of the targeted 5 actively participated in training and coaching sessions

**5**

local champions per school were capacitated as supporting mentors and coaches



In tennis, 5 teachers were capacitated as programme coordinators to oversee activities in their respective schools, while a dedicated local coordinator was appointed to facilitate inter-school leagues.

### Tennis

**5**

teachers capacitated as programme coordinators

**1**

local programme coordinator appointed to facilitate inter-school leagues



## New Primary School in Humansdorp!

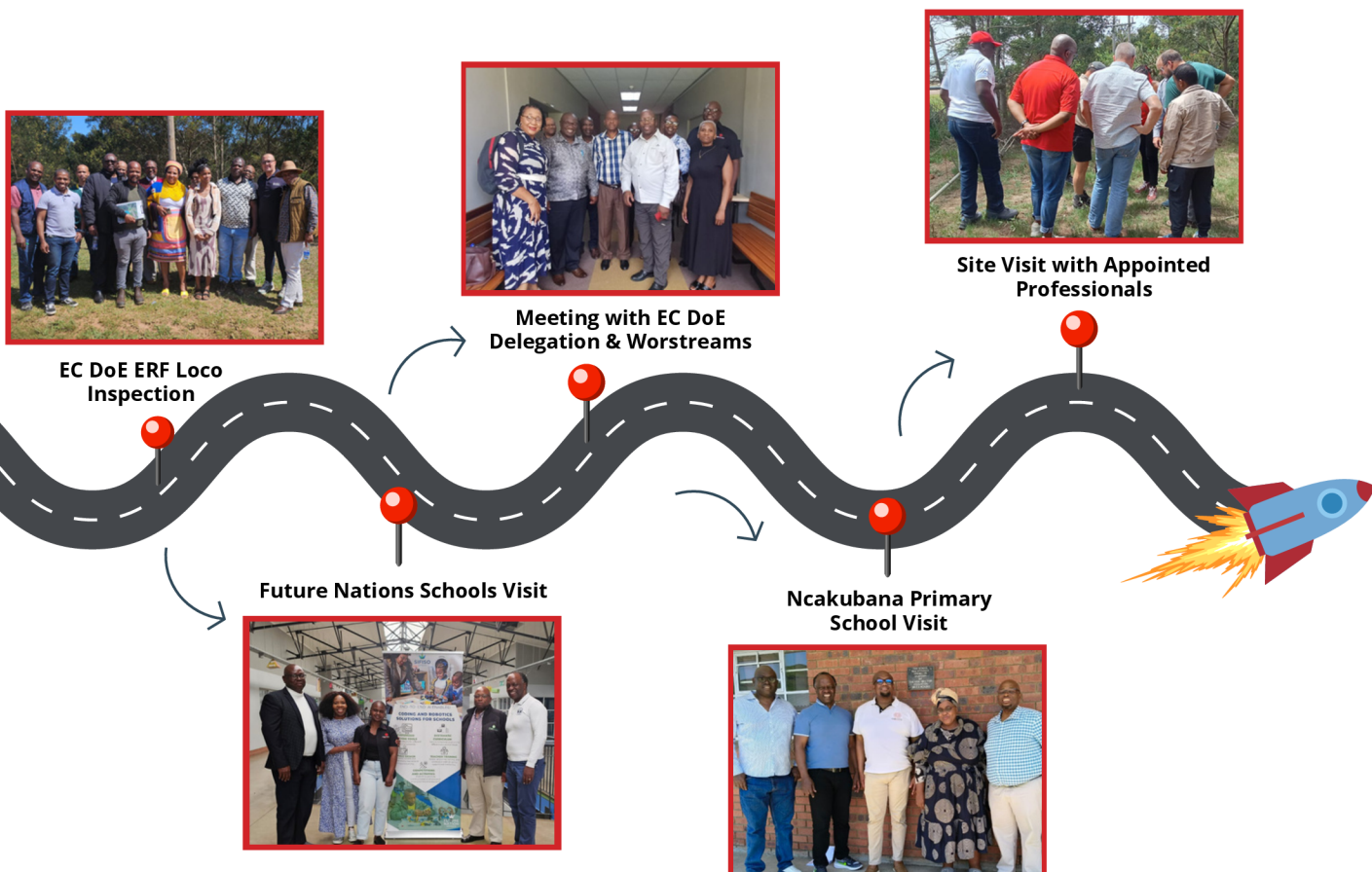
Quarter 3 marked significant progress for the new primary school initiative, with major milestones achieved! One key development is the appointment of service providers in line with the KWFCDT's transparent and inclusive procurement process.

The following service providers have been appointed to fulfil various roles required in the establishment of a new school:

SERVICE	SERVICE PROVIDER
Land Survey/Site Mapping	Maarschalk & Partners Land Surveyors
Environmental Impact Assessment	Coastal and Environmental Services
Civil Engineering Assessment	Altrama Structural Engineering
Traffic Impact Assessment	Habitat Link Consulting
Subdivision Exemption & Rezoning Application	Urban Dynamics
Architectural Design & Plan	C.SOFT Design

Among the appointed service providers is C. Soft Design, a dynamic, female and youth-owned architectural practice.

With expertise in diverse architectural typologies and a passion for innovative, socially responsive design, this team is set to bring fresh ideas and cost-effective solutions to reshape the built environment for the better.



## Extra-Curricular Transport Support Pilot

The KWFCDT continues to prioritise holistic learner development through its Extra-Curricular Transport Support initiative. Recently, 440 primary school learners from Mzingisi and Sand Water Primary Schools were supported with transport to attend netball, hockey, and chess fixtures.

This initiative not only ensures learners can participate in activities that promote teamwork, discipline, and personal growth but also highlights the Trust's commitment to creating opportunities for young minds to thrive both in and outside the classroom.

**440**

learners from Mzingisi and Sand Water Primary Schools supported

# Land, Infrastructure and Buildings

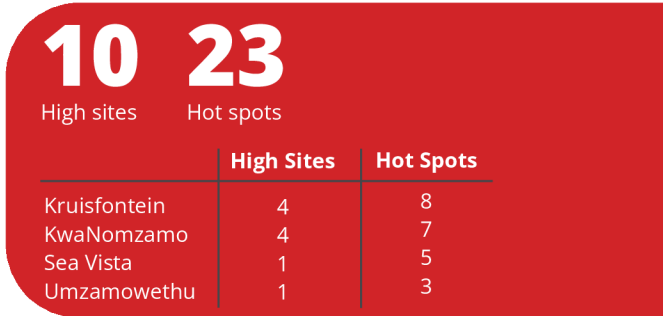
## Community Wi-Fi Project

The KWFCDT successfully completed a two-day activation and launch of the Community Wi-Fi Project, marking a major milestone in addressing the challenges faced during its implementation.

Aligned with the “smart cities” framework, this initiative aims to bridge the digital divide by providing free internet access within the KWFCDT beneficiary communities.

Day one featured an activation drive across three beneficiary communities: Umzamowethu, Kruisfontein, and KwaNomzamo. The drive focused on educating community members about the free Wi-Fi, demonstrating how to access it, and promoting productive internet usage.

On day two, the activation concluded at Sea Vista Primary School, followed by an official launch event attended by key stakeholders. This project represents a significant step toward fostering digital inclusion and empowering communities with access to information and opportunities.

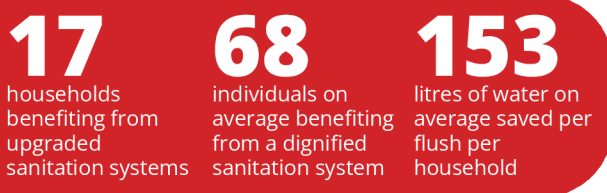


## Umsamowethu House Retrofit

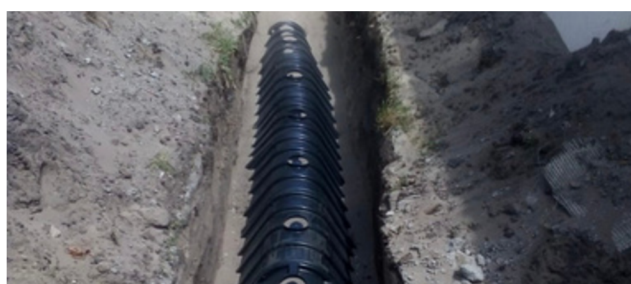


The Sanitation Solution component of the Umsamowethu House Retrofit Project officially began in October 2024. Phase 1 of the initiative, targeting 17 households, has been successfully completed, marking an important step toward improved living conditions in the Umsamowethu community.

This project will benefit a total of 99 households, upgrading their sanitation systems to address critical sewer challenges identified by residents during a needs analysis conducted by the KWFCDT in July 2023.



The initiative aims to eliminate environmental and unhealthy living conditions in the community, aligning with the Trust’s commitment to fostering safe, dignified, and sustainable living environments for its beneficiary communities.





# Welfare and Humanitarian Support

## CBO and NPO Capacity Building Programme



In September 2024, twenty participants from sixteen local NPOs and CBOs proudly received their Management Skills Certificates as part of the KWFCDT's CBO and NPO Capacity Building Programme.

One of the key highlights of the programme was the eagerness among participants to enhance their skills and continuously strengthen their organisations.

The initiative also paved the way for a collaborative network, enabling participants to share resources and work together more effectively for the benefit of their communities. The Trust celebrates this achievement as a step toward building resilient, empowered organisations that can drive lasting impact.

**20**

individuals awarded with a Management Skills Certificate

**16**

local NPOs and CBOs capacitated



## Supporting Jongilanga Service Centre with a New Facility

The KWFCDT has once again partnered with a local NPO, reaffirming its commitment to playing a catalytic role within its beneficiary communities.

The Trust is constructing a dedicated facility for the Jongilanga Service Centre in KwaNomzamo, ensuring uninterrupted operations for the NPO. The Centre, which provides healthcare and social activities for senior citizens, previously relied on the community hall, often unavailable due to other activities.



The new facility will feature a kitchen, office space, two toilets (one disabled-friendly), and an open area for activities like exercising, sewing, and knitting. This project reflects the Trust's commitment to enhancing community well-being and supporting vulnerable groups.





# CALL FOR PROPOSALS

## WELFARE & HUMANITARIAN SUPPORT

<b>CFP #:</b> W & HS Q4/2024	<b>TO BE SUBMITTED TO:</b> Kouga Windfarm Community Development Trust (KWFCDT) ON EMAIL BELOW
<b>CLOSING DATE:</b> Friday 25 February 2025	
<b>PROJECT:</b> WELFARE & HUMANITARIAN SUPPORT	<a href="mailto:INFO@KWFTRUST.CO.ZA">INFO@KWFTRUST.CO.ZA</a>

The KWFCDT invites CBOs, NGOs, and NPOs that are involved in WELFARE & HUMANITARIAN SUPPORT in the four focal communities to submit funding proposals for community development.

Full descriptions, guidelines, and application forms can be downloaded from [HERE](#). Enquiries can be directed to [info@kwftrust.co.za](mailto:info@kwftrust.co.za).

---

# THANK YOU!



082 544 5618



042 004 0003



[info@kwftrust.co.za](mailto:info@kwftrust.co.za)



[www.kwftrust.co.za](http://www.kwftrust.co.za)



7 Kemp Street,  
Humansdorp, 6300