



kouga wind farm
Community Development Trust

»»» **Q2 NEWSLETTER** «««
**BUILDING RESILIENT, SELF-RELIANT,
AND SUSTAINABLE COMMUNITIES**
August 2025



082 544 5618



042 004 0003



info@kwftrust.co.za



www.kwftrust.co.za



7 Kemp Street,
Humansdorp, 6300

About

the Kouga Wind Farm Community Development Trust



Vision

To be a catalyst that empowers communities to be resilient, self-reliant, and sustainable.



Mission

To fund and support interventions aimed at improving the quality of life, and the quality of education & skills through collaboration with key stakeholders.



Values

Trustworthy, Engaged, Collaborative, and Empowering

Q2 News

And Highlights

Kouga FM Outside Broadcasting Unit Handover

The Kouga Wind Farm Community Development Trust handed over a new Outside Broadcasting Unit to Kouga FM, marking an exciting milestone in strengthening community communication across the Kouga region.

This mobile unit will enable Kouga FM to broadcast directly from community spaces, events, and project sites, bringing local stories, important updates, and community voices closer to the people they serve.



The handover reflects the Trust's commitment to supporting platforms that promote access to information, community connection, and active participation across its beneficiary communities.

Local Ward Councillor Engagement on the New Humansdorp Primary School

The Kouga Wind Farm Community Development Trust recently met with local ward councillors to provide a progress update on the new primary school development in Humansdorp.

The engagement forms part of the Trust's ongoing commitment to transparent communication and keeping community leadership informed as the project moves forward.



New Primary School in Humansdorp: SMME Induction

The Kouga Wind Farm Community Development Trust recently held an induction session for seven local SMMEs appointed to clear the site for the new primary school in Humansdorp.

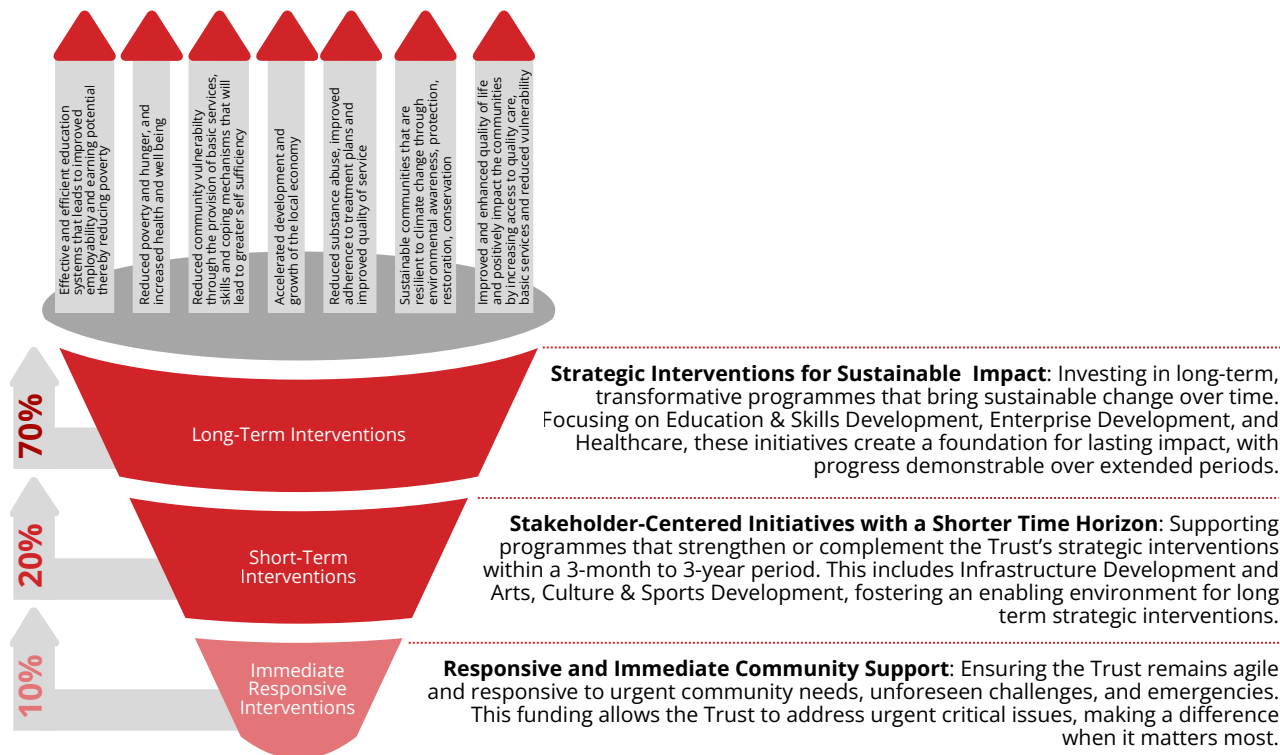
The session ensured that all contractors are aligned on safety, environmental requirements, and project expectations, while supporting local enterprise participation in the development process.

Strategy Funding Matrix

And Project Applications

The 70/20/10 Strategy Framework

In a continuous effort to effectively respond to the unprecedented funding requests across the Trust's seven focal pillars, the Trust has sharpened its strategy, adopting a more intentional approach to fulfil its mandate with the new 70/20/10 strategy framework.



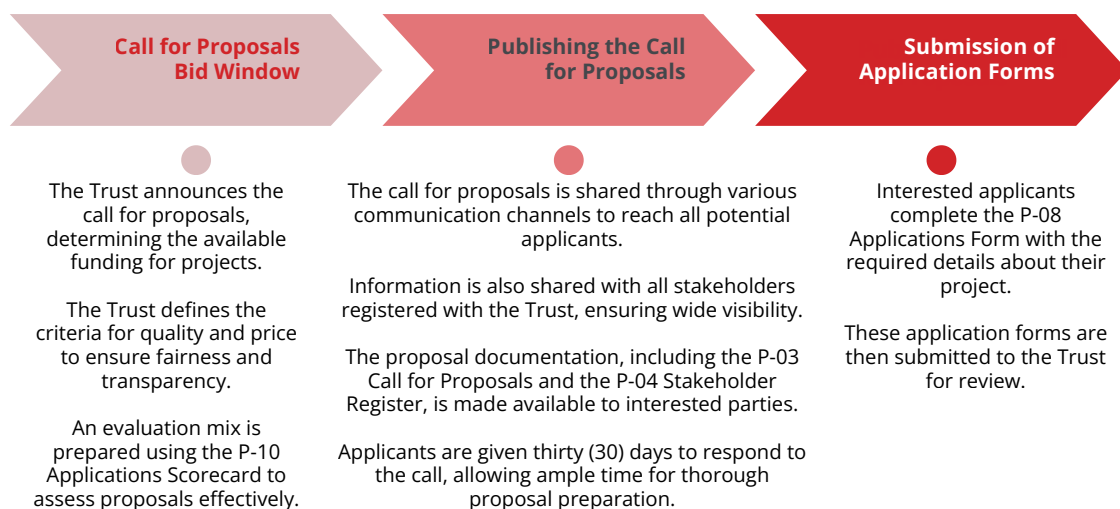
The Five Key Funding Principles

With the new funding strategy framework, the Trust will be guided by five key Funding Principles:

- Embracing collaborations with service providers (SPs)
- Encouraging multi-funding
- Fostering multi-sectoral participation
- Excluding funding of operational costs like staff salaries and office rentals
- Implementing a cap on management fees

Funding Application Process

From the initial call for proposals, to submission, the Trust's goal is to support innovative projects that foster community resilience, self-reliance, and sustainability. For detailed information and application documents, visit: <https://kwftrust.co.za/applications/>



Education and Skills Development

Combi-Courts Project: Creating Spaces for Youth Sport and Development

The Kouga Wind Farm Community Development Trust is encouraged by the positive impact of the newly constructed and refurbished combi-courts across its beneficiary communities. These facilities are creating safe and accessible spaces where learners can play, stay active, and develop their sporting talents.

A recent highlight was the first official netball games played at the Sandwater combi-court, where the Under-12 and Under-13 netball teams from Sandwater and Mzingisi Primary Schools took to the court in an exciting display of teamwork, energy, and sportsmanship.



This occasion marked an important milestone for the school and the surrounding community.

Supporting sport at school level forms part of the Trust's broader commitment to youth development, recognising the role that sport plays in building confidence, discipline, teamwork, and healthy lifestyles.



Extra-Curricular Transport Support Pilot

The Trust continues to support learners from its eight beneficiary schools through the Extra-Curricular Transport Support Pilot, enabling access to educational opportunities beyond the classroom.

By removing transport barriers, the programme supports learner participation in enrichment activities. A recent highlight includes Grade 3 learner Thanda Khayone, who represented her school at the DBE Mental Maths Quiz in Jeffreys Bay and received a certificate for her participation.

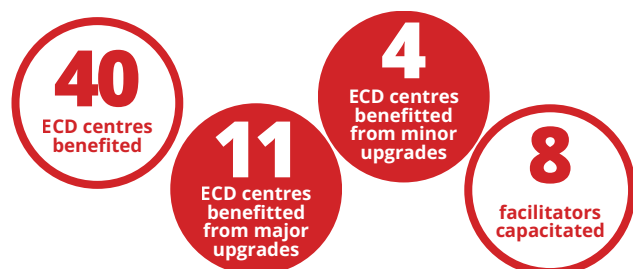
Through this initiative, the Trust remains committed to nurturing young talent and supporting meaningful learning experiences.

Kouga ECD Project: Five Years of Impact

The Kouga Wind Farm Community Development Trust recently marked the conclusion of the Kouga Early Childhood Development Project, celebrating five years of meaningful investment in early learning across the Kouga Local Municipality.

The project strengthened ECD centres, supported educators, and improved learning environments, helping to give young children a strong foundation for future learning.

The Trust extends its appreciation to all partners, educators, and stakeholders who contributed to the success of this initiative, including the Centre for Early Childhood Development and Africa A+ Schools. While the project has concluded, its impact will continue to benefit children and communities for years to come.



New Primary School in Humansdorp

The Trust, in partnership with the Kouga Local Municipality, conducted some environmental rehabilitation work along the R102 as part of preparations for the new primary school development.

The project focused on removing invasive alien vegetation and restoring the endangered Renosterveld species on the site.

Seven local SMMEs, including three women-owned businesses, were appointed to carry out the work. In support of local enterprise development, the Trust also provided each SMME with chainsaws to strengthen their businesses beyond this project.



To support planning and continuity, the Trust has appointed Mr. Glenn Harris as a temporary resource to assist with groundwork ahead of the appointment of a permanent Principal in line with Department of Education processes.

With over 40 years of experience in primary education leadership, Mr. Harris will help strengthen systems and structures during the planning and resourcing phase.

7

SMEs appointed: 2
Kruisfontein, 1 Oyster Bay,
3 KwaNomzamo, 1 Sea Vista

40

semi-skilled
labourers
employed



Ongoing ECD Nutrition Support in Partnership with The Lunchbox Fund

The Kouga Wind Farm Community Development Trust remains committed to strengthening early childhood development through continued nutritional support, delivered in partnership with The Lunchbox Fund. This programme plays a vital role in supporting healthy growth and learning by ensuring that young children receive consistent, nutritious meals during their formative years.

Through this partnership, the Trust continues to address both child nutrition and community livelihoods, reinforcing its commitment to holistic early childhood development.

R320K+

spent in Q2 on stipends for Food Mamas

R72K+

monthly spend on stipends

22

food mama
jobs sustained

660

children served with
nutritious meal everyday

35K+

meals served

Work Readiness Programme: Preparing Youth for the World of Work

In collaboration with Injongo FET & SETA College, the Kouga Wind Farm Community Development Trust introduced a Work Readiness Programme in Sea Vista to support young people as they prepare for employment opportunities.

Over six weeks, participants gained practical skills in workplace readiness, customer service, professional waitering, basic fire-fighting, as well as CV writing and interview preparation.

Learners then started preparing for two months of practical workplace training at Cape St. Francis Resort, where they will gain valuable real-world experience.

This initiative forms part of the Trust's Education and Skills Development Pillar, helping local youth build strong foundations for meaningful careers.



20

unemployed
youth enrolled
in the
programme

Land, Infrastructure and Buildings

Kouga Cricket Development Programme

From June to August, the Kouga Cricket Development Programme, funded by the Kouga Wind Farm Community Development Trust, reached approximately 1,950 learners across six schools in Humansdorp, Oyster Bay, and St Francis Bay.



The programme supported the formation of Under-11 and Under-13 school teams, with over 60 players participating, and culminated in Kouga's first structured T10 cricket tournament. These activities are building confidence, teamwork, and pride among young learners through sport.

The Trust thanks its partners DSRAC, First Choice, and Trellidor Jeffreys Bay for their continued support as it works towards building resilient and sustainable communities.

Key Impact: Reach & Growth

JUNE ±540
learners across 5 schools

JULY 600+
learners during clinics
& school sessions

AUGUST 800+
learners across 6 schools

JUN-AUG ±1,950
Total Learners Reached

Key Impact: Skills & Teams



U11 & U13
school teams formed



Holiday Cricket Clinics
held across communities



60+
players participated

6 schools competed in Kouga's first-ever structured T10 tournament!

Jongilanga Service Centre

The Trust celebrated with the local community, the handover of the newly constructed Jongilanga Service Centre facility during a joint community session held at the KwaNomzamo Community Hall.

The dedicated facility provides a safe and dignified space for elderly community members to access care and support services. Equipped with its own office, kitchen, accessible ablution facilities, and sewing and knitting equipment, the centre can now operate independently and support income-generating activities for its members, without relying on the shared community hall.

This milestone reflects the Trust's ongoing commitment to promoting dignity, accessibility, and sustainable community support for senior citizens within its beneficiary communities.



50

senior citizens to
benefit from the facility

R15K

per annum estimated
potential revenue



Enterprise Development

Enterprise Development Programme

As part of its Enterprise Development Programme, the Kouga Wind Farm Community Development Trust, in partnership with Global Leadership Consultants, hosted another capacity-building session with local entrepreneurs.

The session focused on the Business Model Canvas (BMC), providing SMME owners with a practical tool to support informed decision-making, encourage innovation, and plan for sustainable business growth.

Through this programme, the Trust continues to equip local entrepreneurs with the knowledge and resources needed to build resilient businesses and create lasting economic impact within their communities.



12

SMEs capacitated

Multimedia Entrepreneurship Programme: Strengthening Creative Businesses

The Kouga Wind Farm Community Development Trust continues to support emerging creatives through the Multimedia Entrepreneurship Programme, which combines creative development with essential business skills.



During this quarter, Propella Business Incubator's Financial Manager, Siphosethu Martins, led an engaging discussion that challenged participants to rethink the role of business planning in the modern creative economy.

The session encouraged creatives to critically assess traditional business models and explore new approaches to sustainability, growth, and long-term impact.

The programme also hosted a business showcase and finance engagement in Humansdorp, where participants interacted with OUTsurance, FNB, Nedbank, and the Small Enterprise Development and Finance Agency (SEFDA). These engagements provided valuable insights into funding readiness, financial planning, and business growth opportunities.

Through dialogue, exposure, and practical learning, the programme continues to empower creative entrepreneurs to build viable businesses that contribute to local economic development.





THANK YOU!



082 544 5618



042 004 0003



info@kwftrust.co.za



www.kwftrust.co.za



7 Kemp Street,
Humansdorp, 6300