



kouga wind farm
Community Development Trust

»»» **Q4 NEWSLETTER** «««

**BUILDING RESILIENT, SELF-RELIANT,
AND SUSTAINABLE COMMUNITIES**

February 2026



082 544 5618



042 004 0003



info@kwftrust.co.za



www.kwftrust.co.za



7 Kemp Street,
Humansdorp, 6300

About

the Kouga Wind Farm Community Development Trust



Vision

To be a catalyst that empowers communities to be resilient, self-reliant, and sustainable.



Mission

To fund and support interventions aimed at improving the quality of life, and the quality of education & skills through collaboration with key stakeholders.



Values

Trustworthy, Engaged, Collaborative, and Empowering

Q4 News

And Highlights

Day 1 of School at Humansdorp Primary Schhol



The Trust was proud to see **Humansdorp Primary School** welcome learners on their very first day at the new school. This marked a significant step in the journey of this new educational development.

These moments were the beginning of a new chapter for the Humansdorp local community, grounded in opportunity and improved access to quality education for learners.

This exciting and impactful project falls under the Trust's **Education and Skills Development Pillar**, which seeks to improve access and quality of education. Improving access to quality education will lead to improved quality of teaching and learning. This will in turn lead to effective and efficient education systems that leads to improved employability and earning potential thereby reducing poverty.



Jongilanaga Service Centre Testimonial

“

Dear KWFCDT Team,

Warm greetings of the festive season to you all. As we reflect on the year we as **Jongilanga Service Centre** would like to express our sincere gratitude to you for generous donation and support you have extended to us.

You have indeed made a meaningful difference in the lives of our senior citizens, and we truly thankful. We wish you joy, peace and fulfillment. And may the new year bring you success and many more opportunities to impact community positively.

Thank you again and we really value our partnership.

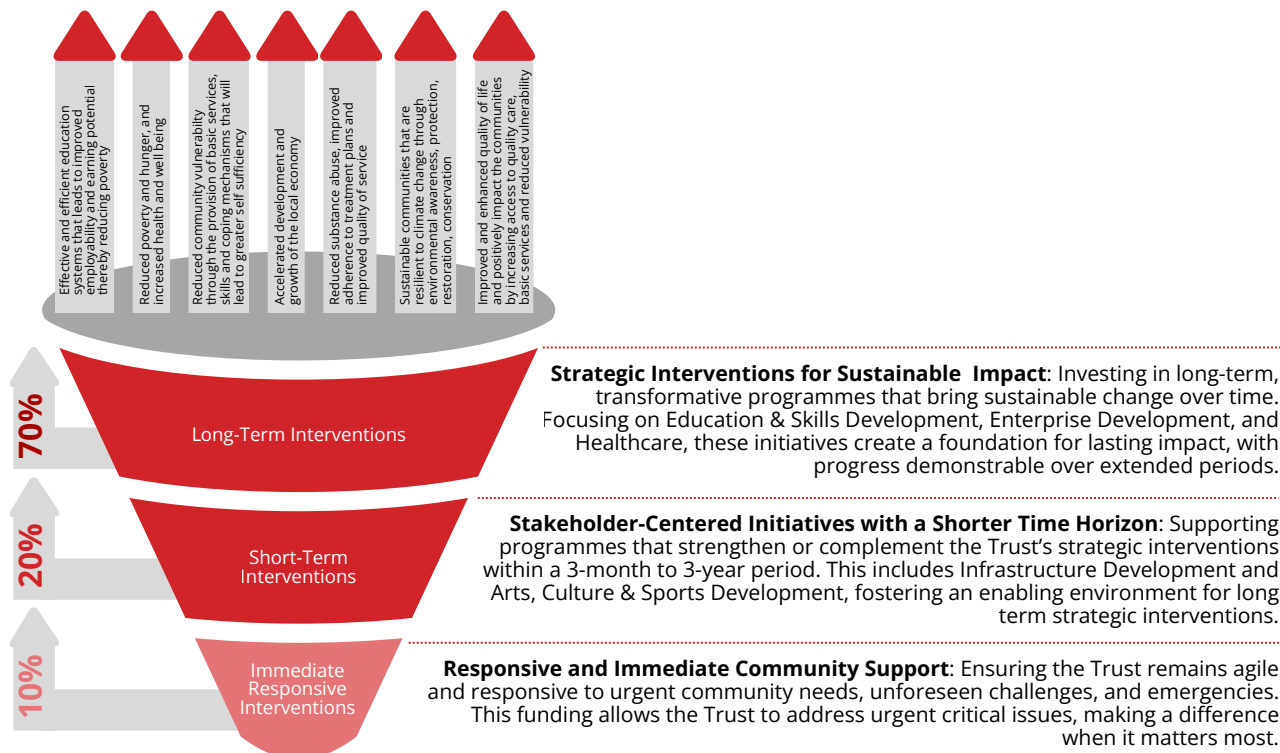
BONGIE - Project Manager

Strategy Funding Matrix

And Project Applications

The 70/20/10 Strategy Framework

In a continuous effort to effectively respond to the unprecedented funding requests across the Trust's seven focal pillars, the Trust has sharpened its strategy, adopting a more intentional approach to fulfil its mandate with the new 70/20/10 strategy framework.



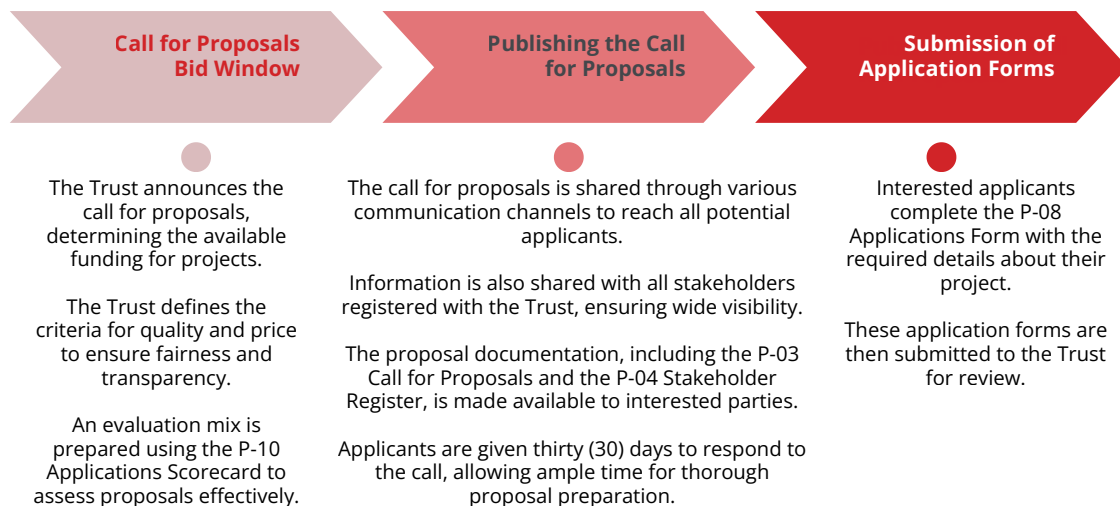
The Five Key Funding Principles

With the new funding strategy framework, the Trust will be guided by five key Funding Principles:

- Embracing collaborations with service providers (SPs)
- Encouraging multi-funding
- Fostering multi-sectoral participation
- Excluding funding of operational costs like staff salaries and office rentals
- Implementing a cap on management fees

Funding Application Process

From the initial call for proposals, to submission, the Trust's goal is to support innovative projects that foster community resilience, self-reliance, and sustainability. For detailed information and application documents, visit: <https://kwftrust.co.za/applications/>



Education and Skills Development

Sports Infrastructure Development - Combi-Courts Project

The **Kouga Wind Farm Community Development Trust** officially handed over the new Lokflor Combi Court at Stulting Primary School as part of the Trust's ongoing Combi Courts Project. The school had made a direct request to the Trust for support.



During the handover, Principal Mr Coetzer thanked the Trust for the partnership, noting that schools do not exist in isolation and that strong community partnerships are important in helping to ensure access to quality education for all learners.



This ongoing initiative reflects the Trust's continued commitment to responding to community needs and investing in infrastructure that supports holistic learner development through sport and recreation.



8 combi-courts retrofitted to date



3 new multipurpose sports courts constructed to date



8.5K+ learners benefitting

Work Readiness Programme



23 unemployed youth enrolled

15 unemployed youth completed the programme



R60K+ estimated earning potential

My name is Nicky, and I would like to share my gratitude. In December, I completed **Core Waiter Training with Injongo FET College, funded by the Kouga Wind Farm Community Development Trust.**

After training, I worked as seasonal staff at St Francis Links. I have now been offered a permanent employment contract.

Thank you to Injongo FET College, Mama Riri, and KWFCDT for believing in me. **This opportunity has opened doors for my future.**

Nicky (Anthonique Jacobs)
Core Waiter Training beneficiary (Kruisfontein)

A key milestone was reached on 27-28 February 2026, when the trained waiters, runners, bar attendants and housekeepers successfully completed their first professional assignment at St Francis Links.

Many participants have since gone on to secure permanent employment at establishments such as Cape St. Francis Resort and St Francis Links, reflecting the value of skills development initiatives that create real pathways to work.

Humansdorp Primary School Development Update

The Humansdorp Primary School project has continued to make encouraging progress over the past few months.



In December, an important milestone was reached when the Humansdorp Primary School site (ERF 3298, Humansdorp) was officially handed over to the appointed contractor, GVK SIYA ZAMA, in preparation for site establishment.

This marked a significant step forward for the project and signalled the move from planning into implementation.

In January, the school hosted an Open Day, welcoming parents and learners to experience the vision for Humansdorp Primary School firsthand. The event gave families an opportunity to explore the school environment, meet the educators, and share in the excitement of this new chapter.



In February, an important milestone was reached when the first brick was officially laid at the school site, marking the start of construction.

This signalled the beginning of a development that will create a lasting impact for learners and the wider Humansdorp community.



Another major milestone followed in February, educators at Humansdorp Primary School completed a robotics training programme aimed at strengthening digital and problem-solving skills in the classroom.

This milestone reflects the school's commitment to equipping teachers with practical tools that will help prepare learners for a fast-changing, technology-driven world.



Together, these milestones show steady and meaningful progress in the development of Humansdorp Primary School. From construction readiness to parent engagement and educator development, each step is helping to build a strong foundation for quality, future-focused education in Humansdorp.

ECD Nutrition Support

Through the ongoing partnership between the KWFCDT and Lunchbox Fund, 24 ECD centres continue to benefit from the nutrition support in the form of lunch and breakfast packs which are delivered to the door of each ECD centre once a month. The meal packs are intended to last the centres for a full month.



The ECD Nutrition Program is tailored to address the needs and constraints within the respective centres, especially pertaining to food preparation equipment, while also ensuring food preparation safety.

The Challenge



of children in South Africa live in **severe child food poverty**. (UNICEF, 2024)

The Trust's Contribution

4

ECDs are currently benefiting from the **breakfast program**: Magaba Daycare, Simanye ECDC, Eagles Accolade and Little Lambs

20

ECDs are currently benefiting from the **lunch program**: Buzzy Bees, Chioma Safe Haven, Ducklings, Faith in Action Daycare, Haasbakkies, Jeugkamp, Kiddie Clubhouse, Kleine Engele Dagsorg, Lelethu Ikhaya Daycare, Makhulu Daycare, Miemies Nurturing Daycare, MJA Daycare, Nolutho, Precious Pride, Rainbow Centre (Special Needs), Siyaphuhla, Star Kids, Talhado Edu & Aftercare, Twinkle, Wonderbees Daycare Center



R320K+

spent in Q4 on stipends for Food Mamas



R72K+

monthly spend on stipends



22

food mama jobs sustained



660+

children served with nutritious meal everyday



35K+

meals served

Land, Infrastructure and Buildings

Kouga Cricket Development Programme

Phase 1 of the **Kouga Cricket Development Programme** provided key insights regarding the prevalent challenges and resource constraints as it relates to cricket development within the KWFCDT beneficiary schools, such as the lack of access to suitable cricket playing facilities.

The three-month programme generated exceptional interest, uncovered emerging talent, and created a strong demand for continued cricket development. The success of the programme highlighted the developmental value of cricket, proving that the talent, interest, and commitment for cricket exists within the communities.



The KWFCDT in partnership with Cricket Champion, is in the process of addressing the challenges identified during phase one of the initiative and crafting a programme that yields a positive impact.

Investment in basic playing surfaces is key to maintaining and building on the momentum created in Phase 1. These facilities will serve as a foundation for cricket development in Kouga.

Key Impact: Reach & Growth

±540

learners across 5 schools

600+

learners during clinics & school sessions

Key Impact: Skills & Teams



U11 & U13

school teams formed



Holiday Cricket Clinics

held across communities

Enterprise Development

Enterprise Development Programme

As part of its Enterprise Development Programme, the Kouga Wind Farm Community Development Trust, in partnership with Global Leadership Consultants, hosted a Business Growth Masterclass at KwaNomzamo Community Hall on 19 February 2026.

The session brought together SMME owners from across the Kouga Local Municipality and provided practical guidance on funding, compliance, and business growth.



42.5% Official unemployment rate
Eastern Cape has the highest unemployment rate in South Africa, which is officially standing at 42.5%!



DECENT WORK AND ECONOMIC GROWTH

Promote sustained, inclusive and sustainable economic growth, full and productive employment and decent work for all

The goal of the programme is to **accelerate and support the development of high-potential EMEs and SMEs**. By strengthening these enterprises, the initiative aims to improve profitability, resilience, survival and long-term sustainability. In turn, this contributes to increased business creation, improved job creation and job protection, and supports the accelerated growth of the local economy.

Aligned with **Sustainable Development Goal 8**, the initiative promotes sustained, inclusive and sustainable economic growth, as well as full and productive employment and decent work for all.

KWFCDT's ENTERPRISE DEVELOPMENT Strategic Pillar

Long Term Deliverables:
Accelerate and support the development of high potential EMEs and SMEs

The acceleration and support of these entities will lead to improved profitability, resilience, survival and sustainability of local enterprises.

This will result in **increased business creation, improved job creation and job protection**. The impact to be seen will be **accelerated development and growth of the local economy**.





THANK YOU!



082 544 5618



042 004 0003



info@kwftrust.co.za



www.kwftrust.co.za



7 Kemp Street,
Humansdorp, 6300