

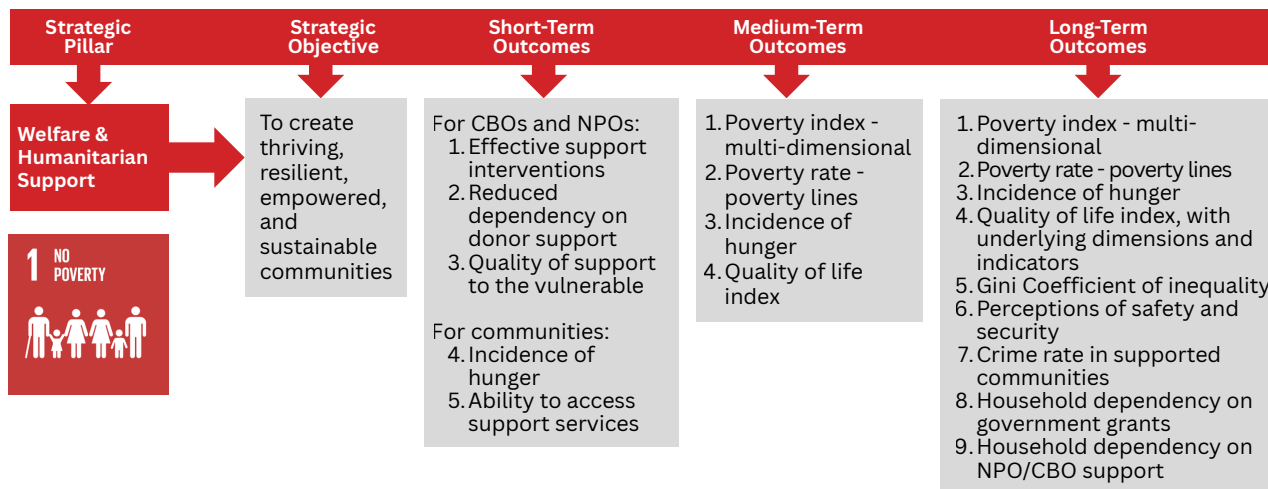


CALL FOR PROPOSALS

Welfare and Humanitarian Support: WF Q1/26

| | |
|--|---|
| KWFCDT #: WF Q1/26 | TO BE SUBMITTED TO: Kouga Windfarm Community Development Trust (KWFCDT) ON EMAIL BELOW |
| CLOSING DATE: Friday, 26 June 2026, 17h00 | |
| PROJECT: WELFARE & HUMANITARIAN SUPPORT | INFO@KWFTTRUST.CO.ZA |

DESCRIPTION



The Kouga Windfarm Community Development Trust’s strategic intent is premised on the theory of change model. The intent is based on three pillars **(1) improving the quality of education and skills development (2) improving the quality of life and (3) reducing poverty** – all this in the four communities of **Kruisfontein, KwaNomzamo, Umzawowethu (Oyster Bay) and Sea Vista.**

In a continuous effort to effectively respond to the unprecedented funding requests across our seven focal pillars, the KWFCDT employs a more intentional approach to fulfill its mandate with the new 70/20/10 strategy framework.

70%: Long-term interventions whose impact becomes visible after 3+ years, under the pillars: Education & Skills Development, Enterprise Development, and Healthcare.

20%: Short-term interventions with a visible impact and implementation within a 3-month to three-year period. This includes the Infrastructure Development and Arts, Culture & Sports Development pillars.

10%: Immediate responsive interventions address urgent community needs or emergencies with instant impact, under the Conservation & Animal Welfare as well as Welfare & Humanitarian Support pillars.

The KWFCDT hereby invites CBOs, NGOs, and NPOs that are involved in WELFARE & HUMANITARIAN SUPPORT in the four focal communities to submit funding proposals for community development.

GUIDELINES ON ACCEPTABLE FUNDABLE PROGRAMMES**Welfare and Humanitarian Support**

1. The care or counselling of, or the provision of education programmes relating to, abandoned, abused, neglected, orphaned or homeless children.
2. The care or counselling of poor and needy persons where more than 90% (ninety per cent) of those persons to whom the care or counselling is provided are over the age of 60 (sixty). The care or counselling of, or the provision of education programmes relating to, physically or mentally abused and/or traumatized persons.
3. The rehabilitation, care or counselling of persons addicted to a dependence forming substance or the provision of preventative and education programmes regarding addition to dependence-forming substances.
4. The promotion and protection of family stability.
5. Community development for poor and needy persons and anti-poverty initiatives, including:
 - a. The promotion of community-based projects relating to self-help, empowerment, capacity building, skills development, or anti-poverty.
 - b. The provision of training, support or assistance to community-based projects contemplated in the promotion of community-based projects relating to self-help, empowerment, capacity building, skills development, or anti-poverty.
 - c. The provision of training, support, or assistance to emerging social enterprises to improve capacity to manage organisations.
 - i. The provision of legal services for poor and needy persons; or
 - ii. The provision of facilities for the protection and care of children under school going age of poor and needy parents.

CRITERIA FOR PROPOSAL EVALUATION

For SED Beneficiary applications, the following information is mandatory to be considered.

- Project rationale and background.
- Implementing organisation founding document, constitution, and Trust Deed where Applicable.
- Management profile, experience, and competencies.
- Completed project contactable references.
- Statutory compliance.
- Latest signed financial statement.
- Related insurances.
- Project technical detail including Problem statement and solution, beneficiaries, design elements of program with clear KPI, scheduled of activities, outcomes, risks and their mitigation.
- Letters of external support for the project. Projects that have multi-partner funding are welcome.
- Detailed project budget breakdown with sections to include technical, management, administration, and other costs. *The Trust does not fund an organisation's day-to-day operational costs e.g salaries, water, electricity, rent, airtime/data. **Project management fees are capped at 10% of the total budget.***
- Project cashflow and tranche payment plan.
- A Competent Person's Report confirming that at least 85% of the benefit received will benefit Black people in the priority community, in accordance with Socio-Economic Development Contributions no. 36928, Department of Trade and Industry Gazette, 11 October 2013.
- Project reporting framework.
- Project impacts - a minimum of 100 people in the communities; community problem resolved; key performance indicators achieved; number of local jobs created; local businesses that have benefited

Applicants must download and complete the [Application Form Document Reference P-08](#)

Completed application form must be submitted with a detailed proposal inline with the above criteria as well as the relevant supporting documents.

EXCLUDED ACTIVITIES

The Projects Procurement Policy also provides clarity on what the Trust does not fund from a projects perspective as defined in the Trust Deed and additional limits set by the Trust. These include:

- Individuals or small groups acting in their personal capacity; save to the extent that such proposed initiatives meet the requirements for community development programs
- Travel, either by groups or as individuals
- Political parties or groups with partisan political affiliations
- Labour unions, save to the extent that such proposed initiatives meet the requirements for community development programs
- Individual bursaries/bursary funds
- Conferences
- Video and film productions
- Cultural exhibitions or once-off cultural events
- Generalized fund-raising circulars or events such as fund-raising dinners or golf days
- Company promotions and membership subscriptions
- Religious organisations (other than community outreach) including construction and maintenance of places of worship
- Loans
- Overseas tours and exchanges
- Projects beyond the capacity of the trust e.g., endowments
- Large infrastructure projects e.g., dams, roads and water being undertaken by government
- Advertising in educational or other supplements
- Start-ups and/or organisations at ideation phase

Guidelines and application forms can be downloaded [HERE](#). Enquiries can be directed to info@kwftrust.co.za.